



new jersey

# ODYSSEY OF THE MIND

www.njootm.org

## 2022 Coastal Plains Regional Tournament Directions Woodstown High School & Mary Shoemaker Elementary School

### From I-295 South:

**Time Estimate: approximately 20 minutes from exit to Woodstown High**

- Take I-295 SOUTH to Exit 10
- At the top of the exit, make a left onto CENTER SQUARE RD
- Drive approx 3.0 miles to the end of Center Square Rd and turn RIGHT onto KINGS HWY/CR-620 S
- Go 3.7 miles and turn LEFT onto AUBURN RD at the red flashing light
- Go 2.1 miles and turn RIGHT onto NORTH MAIN ST/NJ-Rt 45

*for Woodstown High:*

- Go ½ mile and turn LEFT onto EAST AVE/US-Rt 40/POLE TAVERN-WOODSTOWN RD
- Woodstown High School will be approx ¼ of a mile on your RIGHT

*for Mary S Shoemaker Elementary:*

- Go ½ mile and continue straight through the light at US-Rt 40
- Go three blocks and turn LEFT onto EAST MILLBROOKE AVE
- Mary S Shoemaker Elementary will be approx ½ of a mile on your LEFT

### From NJ Turnpike North or South:

**Time Estimate: approximately 25 minutes from exit to Woodstown High**

- Get off the NJ Turnpike at Exit 2 (US-Rt 322)
- Turn LEFT onto US-322 towards Kings Hwy
- Drive ¾ mile and turn LEFT onto KINGS HWY/CR-551 S
- Go 1.2 miles and BEAR LEFT onto KINGS HWY/CR-620
- Go 4.6 miles and turn LEFT onto AUBURN RD at the red flashing light
- Go 2.1 miles and turn RIGHT onto NORTH MAIN ST/NJ-Rt 45

*for Woodstown High:*

- Go ½ mile and turn LEFT onto EAST AVE/US-Rt 40/POLE TAVERN-WOODSTOWN RD
- Woodstown High School will be approx ¼ of a mile on your RIGHT

*for Mary S Shoemaker Elementary:*

- Go ½ mile and continue straight through the light at US-Rt 40
- Go three blocks and turn LEFT onto EAST MILLBROOKE AVE
- Mary S Shoemaker Elementary will be approx ½ of a mile on your LEFT

### From NJ-Rt 55 South:

**Time Estimate: approximately 25 minutes from exit to Woodstown High**

- Take NJ-Rt 55 S to Exit 48, Ellis Mill Rd / CR-641 towards Ferrell
- Go approx 4 miles and turn LEFT onto BRIDGETON PIKE/NJ-Rt 77
- Go 2 miles and turn RIGHT onto GLASSBORO RD/CR-619
- Drive approx 2.6 miles and make a SLIGHT RIGHT onto HARDING HWY/US-Rt 40

*for Woodstown High:*

- Woodstown High School will be about 3 miles down on your LEFT

*for Mary S Shoemaker Elementary:*

- Continue past Woodstown High School and follow the "To Mary Shoemaker" directions below

### To Mary Shoemaker School from Woodstown High

**Time Estimate: approximately 4 minute drive from Woodstown High to Shoemaker Elem.**

- Turn LEFT out of the Woodstown High driveway onto HARDING HWY / US-Rt 40 / EAST AVE.
- Go to the first light and turn LEFT onto MAIN ST / NJ-Rt 45
- Go three blocks and turn LEFT onto EAST MILLBROOKE AVE
- Mary S Shoemaker Elementary will be approx ½ of a mile on your LEFT

**Woodstown High School  
140 East Ave  
Woodstown, NJ 08098**

**Mary S. Shoemaker Elementary School  
201 East Millbrooke Ave  
Woodstown, NJ 08098**



new jersey

# ODYSSEY OF THE MIND

www.njootm.org

## 2022 Coastal Plains Regional Tournament Directions Woodstown High School & Mary Shoemaker Elementary School

### Officials Parking:

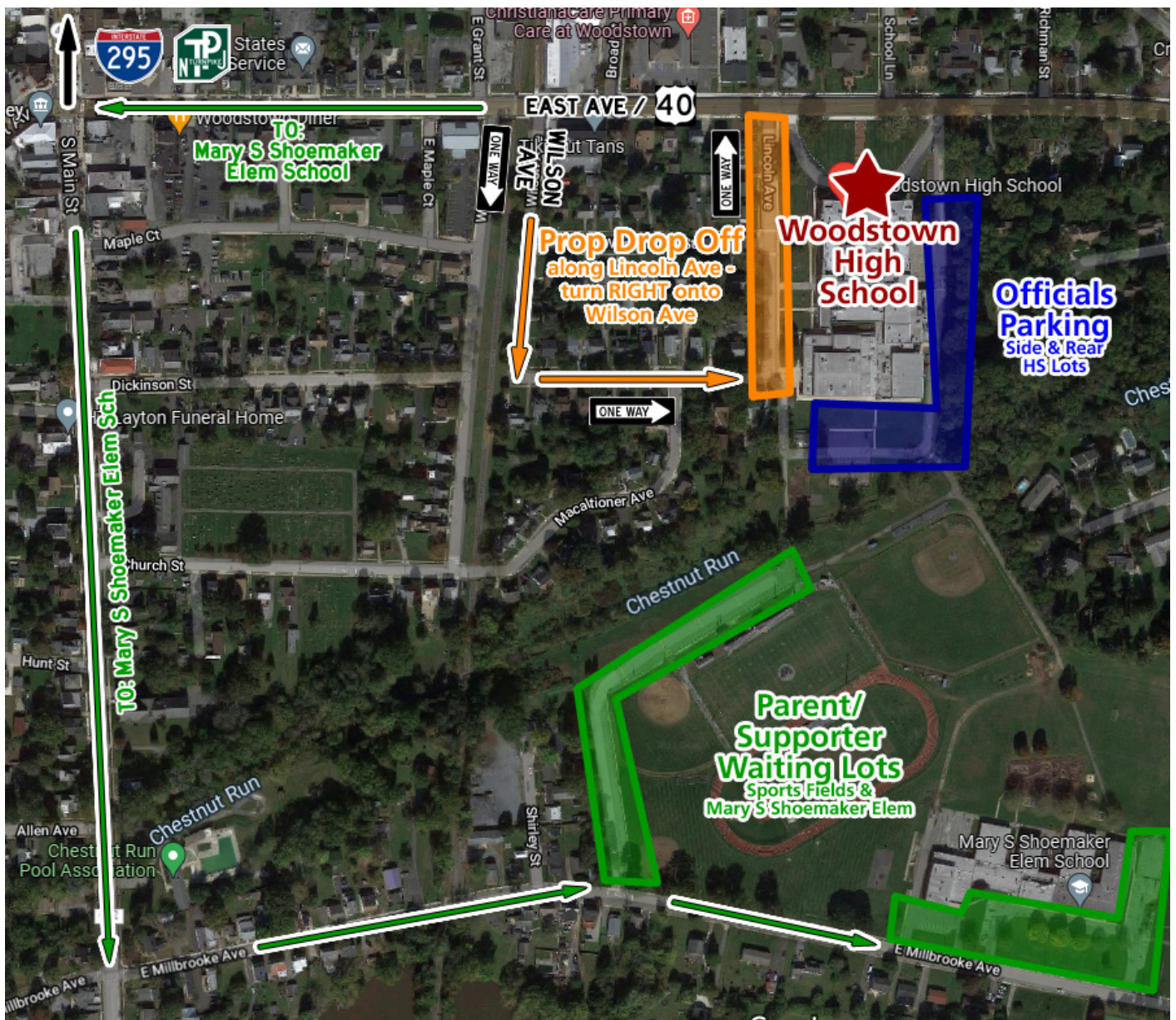
- Officials should park in the side and rear lots of the High School. Entry to these lots is just past the front bus circle.

### Parent/Supporter Waiting Lots:

- Parent/Supporter Waiting Lots are Mary S Shoemaker Elem School and the Sports Fields adjacent to MSS Elem

### Props Loading/Unloading:

- Prop loading and unloading will be along LINCOLN AVE adjacent to the High School.
- To reach, turn off of EAST AVE/US-40 onto WILSON AVE and follow the one-way streets



### Bus/Truck Parking:

- All buses and trucks must park at Mary S Shoemaker School or the adjacent Sports Fields