



new jersey

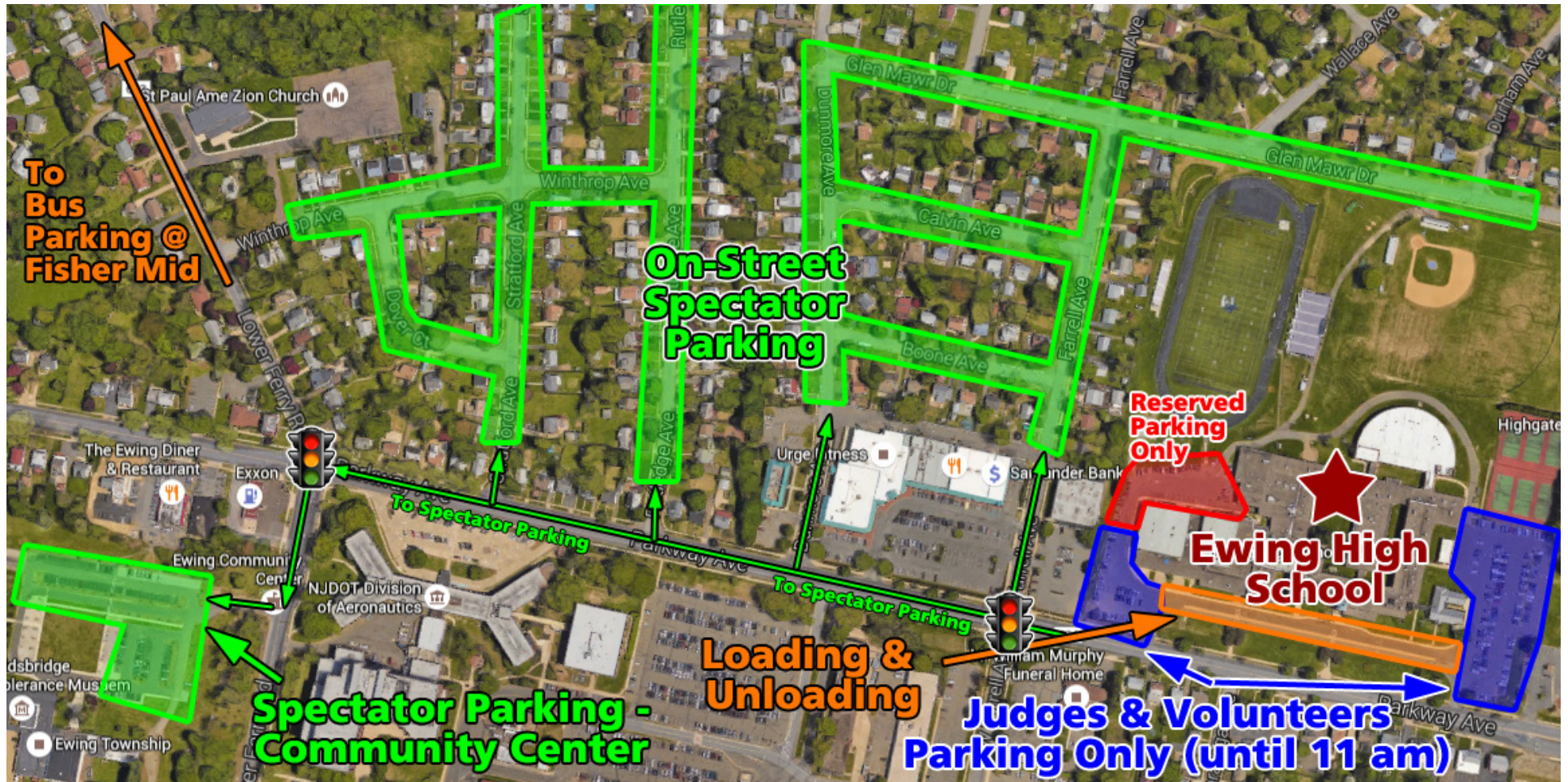
ODYSSEY OF THE MIND

since 1978

2018 State Finals Parking

Ewing High School

900 Parkway Ave • Ewing, NJ 08618



Spectator Parking:

- Spectators can park on surrounding streets or at the Ewing Community Center (green areas). **Please follow posted traffic laws.**
- Parking on campus at Ewing High is reserved for tournament Judges and Volunteers (blue areas) until 11 am.
- The parking lot (red area) at the back of the school is reserved for NJOotM Board of Directors and Ewing High staff use only.
- *Please be respectful of the local businesses and do not park in their lots. They thank you!*
- *NJ Dept. of Transportation has also restricted the use of their lots and are unavailable.*

Bus & Truck Parking:

- Bus Parking can be found at Fisher Middle School on Lower Ferry Rd.
- Directions by Car:
 - Turn RIGHT out of the Ewing High parking lot
 - Go to the 2nd traffic light and turn RIGHT
 - Drive approximately 1 mile, Fisher Middle School will be on your LEFT.
 - Fisher Middle School - 1325 Lower Ferry Rd, Ewing, NJ 08618



new jersey

ODYSSEY OF THE MIND

www.njootm.org

2018 State Finals Directions Ewing High School

Note: Exit numbers on I-295 / I-95, north of US Rt 1 have changed, please look for the new numbers.

From the North via NJ Turnpike

- Take Exit 7A for I-195 WEST.
- Get onto I-195 WEST and take it to EXIT 1 B (*old exit 60 B*) for I-295 N (towards Pennsylvania)
- Proceed another approx 12 miles and get off at EXIT 72 (*old exit 4*) – NJ RT 31 (Ewing/Pennington)
- At the top of the ramp, turn LEFT onto NJ RT 31 SOUTH
- Go to the 8th light and turn RIGHT onto OLDEN AVE
- Take OLDEN AVE to the end and turn RIGHT onto PARKWAY AVE
- About 100 yards down, Ewing High School will be on your RIGHT

From the South via I-295

- Go NORTH on I-295
- Get off at EXIT 72 (*old exit 4*) – NJ RT 31 (Ewing/Pennington)
- At the top of the ramp, turn LEFT onto NJ RT 31 SOUTH
- Go to the 8th light and turn RIGHT onto OLDEN AVE
- Take OLDEN AVE to the end and turn RIGHT onto PARKWAY AVE
- About 100 yards down, Ewing High School will be on your RIGHT

From the East via I-195

- Take I-195 WEST and take it to EXIT 1 B (*old exit 60 B*) for I-295 N (towards Pennsylvania)
- Proceed another approx 12 miles and get off at EXIT 72 (*old exit 4*) – NJ RT 31 (Ewing/Pennington)
- At the top of the ramp, turn LEFT onto NJ RT 31 SOUTH
- Go to the 8th light and turn RIGHT onto OLDEN AVE
- Take OLDEN AVE to the end and turn RIGHT onto PARKWAY AVE
- About 100 yards down, Ewing High School will be on your RIGHT

From the North via US RT 1

- Follow US RT 1 SOUTH past the Quakerbridge Mall.
- Stay in the RIGHT lane and take I-295 NORTH (towards Pennsylvania)
 - Note: this used to be I-95 SOUTH (towards Pennsylvania)
- Proceed approx 4 miles and get off at EXIT 72 (*old exit 4*) – NJ RT 31 (Ewing/Pennington)
- At the top of the ramp, turn LEFT onto NJ RT 31 SOUTH
- Go to the 8th light and turn RIGHT onto OLDEN AVE
- Take OLDEN AVE to the end and turn RIGHT onto PARKWAY AVE
- About 100 yards down, Ewing High School will be on your RIGHT

From Hunterdon County

- Take US-202/NJ-31 SOUTH to the exit for NJ-31 SOUTH towards Trenton.
- Follow NJ-31 SOUTH through the Pennington Circle (a Shop Rite is on the circle)
- Cross over I-295, take the 8th light (after I-295) and turn RIGHT onto OLDEN AVE
- Take OLDEN AVE to the end and turn RIGHT onto PARKWAY AVE
- About 100 yards down, Ewing High School will be on your RIGHT

Ewing High School
900 Parkway Avenue
Ewing NJ, 08618